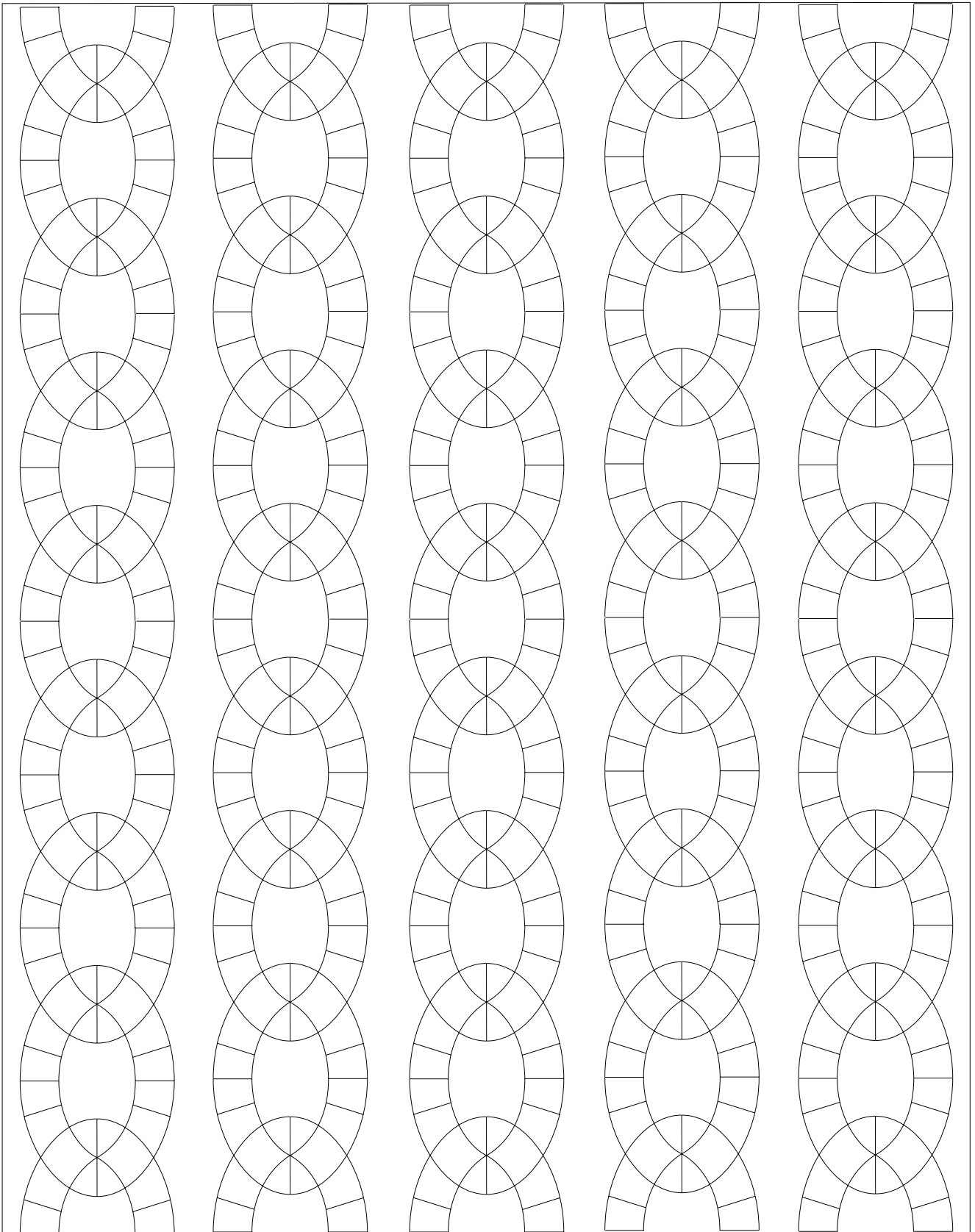


DAISY CHAIN QUILT pattern by Brigitte Giblin



DAISY CHAIN QUILT pattern by Brigitte Giblin

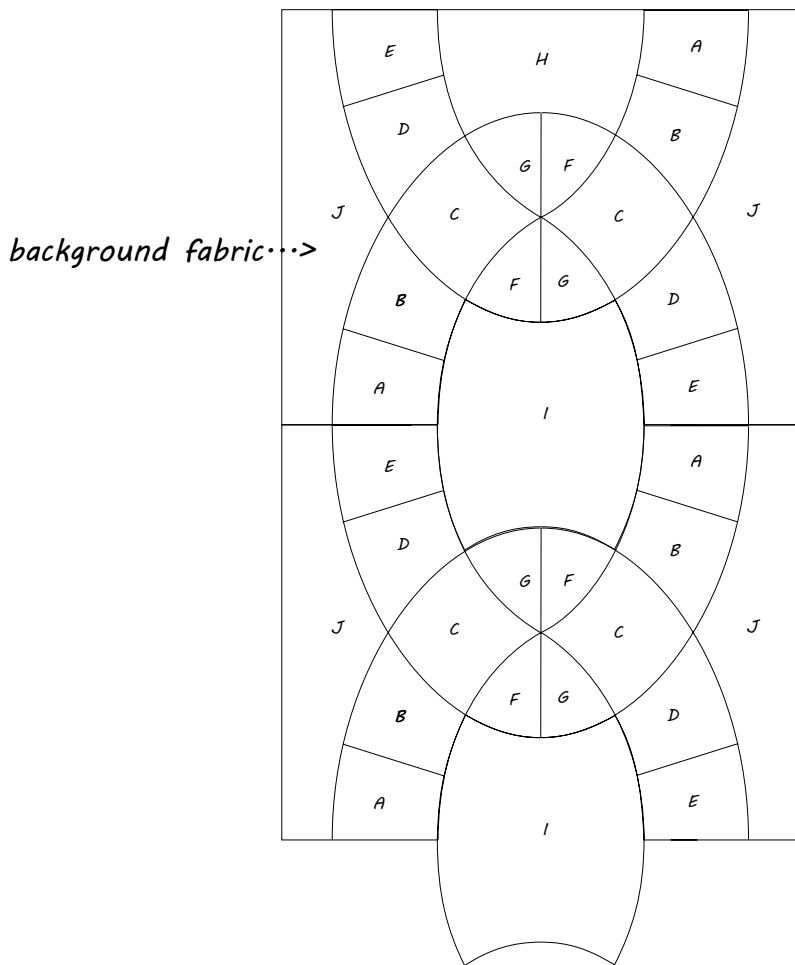


pattern consists of five rows of 7 + two half linked-chain blocks

Finished size: 64" x 50" wide

copyright: brigittegiblinquilts.com

DAISY CHAIN QUILT pattern by Brigitte Giblin



7 "linked-chain" blocks
+ two half blocks
make up each vertical row.

* for each block: cut 2 of each
pattern piece A,B,C,D,E,F,G.

* for each row: cut 16 of
pattern piece J from 8
different background fabrics
or shirtings-2 from each fabric.

* for each row: cut 7 centre
panels I + plus 2 half-centre
panels H for top and bottom

LABELLED PATTERN PIECES FOR LINKED-CHAIN BLOCK

Note: The cover photo features the Cot size quilt.
Instructions are given for the single-bed size quilt.
Adjust number of pattern pieces needed for the cot size.

See the step-by-step instructions, diagrams and photos for block assembly.

Method: the chains are pieced together in blocks first, then sewn together into rows of 7 blocks + 2 half-blocks.

The background pieces-J, are sewn to the sides of the blocks to complete the rows.
The rows are then sewn together to make up the quilt.

Optional - sew a thin 1" finished strip of print between the rows (cut 1-1/2" wide)

Blocks are hand pieced using 1/4" seam allowance throughout. You could machine piece if you are proficient with curves.

Make accurate cutting templates including 1/4" seam allowance.

Scrap fabrics can be used throughout the quilt. Use small to medium prints for A-G pieces and a larger print for the centres I and H. Background fabrics-J, can be plain, light prints or shirtings.

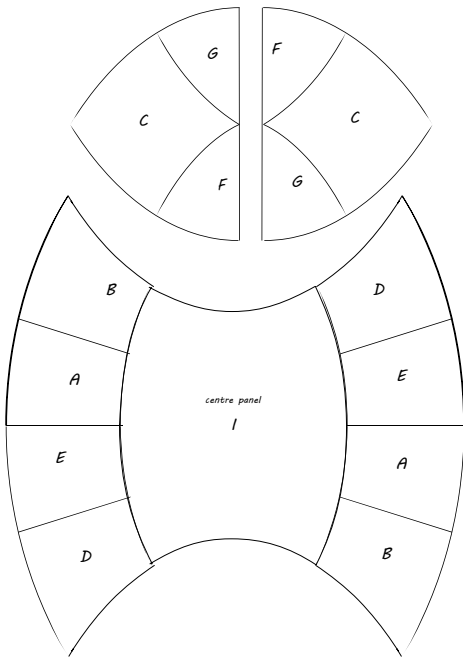
Cut 2 of each pattern piece A-G in the same fabric for each block.

DAISY CHAIN QUILT pattern by Brigitte Giblin

*Note: The cover photo features the Cot size quilt.
Instructions are given for the single-bed size quilt.
Adjust number of pattern pieces needed for the cot size.*

STEP BY STEP INSTRUCTIONS

Special care is needed when cutting the shapes. If you need to mark a sewing line, you should mark all pieces on the wrong side of your fabrics. Cut 2 of each pattern piece in the same fabric. Keep the pieces separate in labeled bags.



Sew the B-A-E-D pieces together as per the diagram to make up two identical arcs. The fabric order will be inverted when the arcs are placed on each side of the centre.

Sew a centre panel-I -between the 2 arcs.

Next, sew the G-C-F pieces together to make one half of the melon shape. Sew the other half the same. The fabric order will be inverted when sewn together. Sew the 2 halves together and then sew to the remainder of the block.

This forms one block. Make 7 blocks for each row plus the 2 half blocks for the top and bottom. Sew the blocks and half blocks together to make up one row of linked chain blocks.

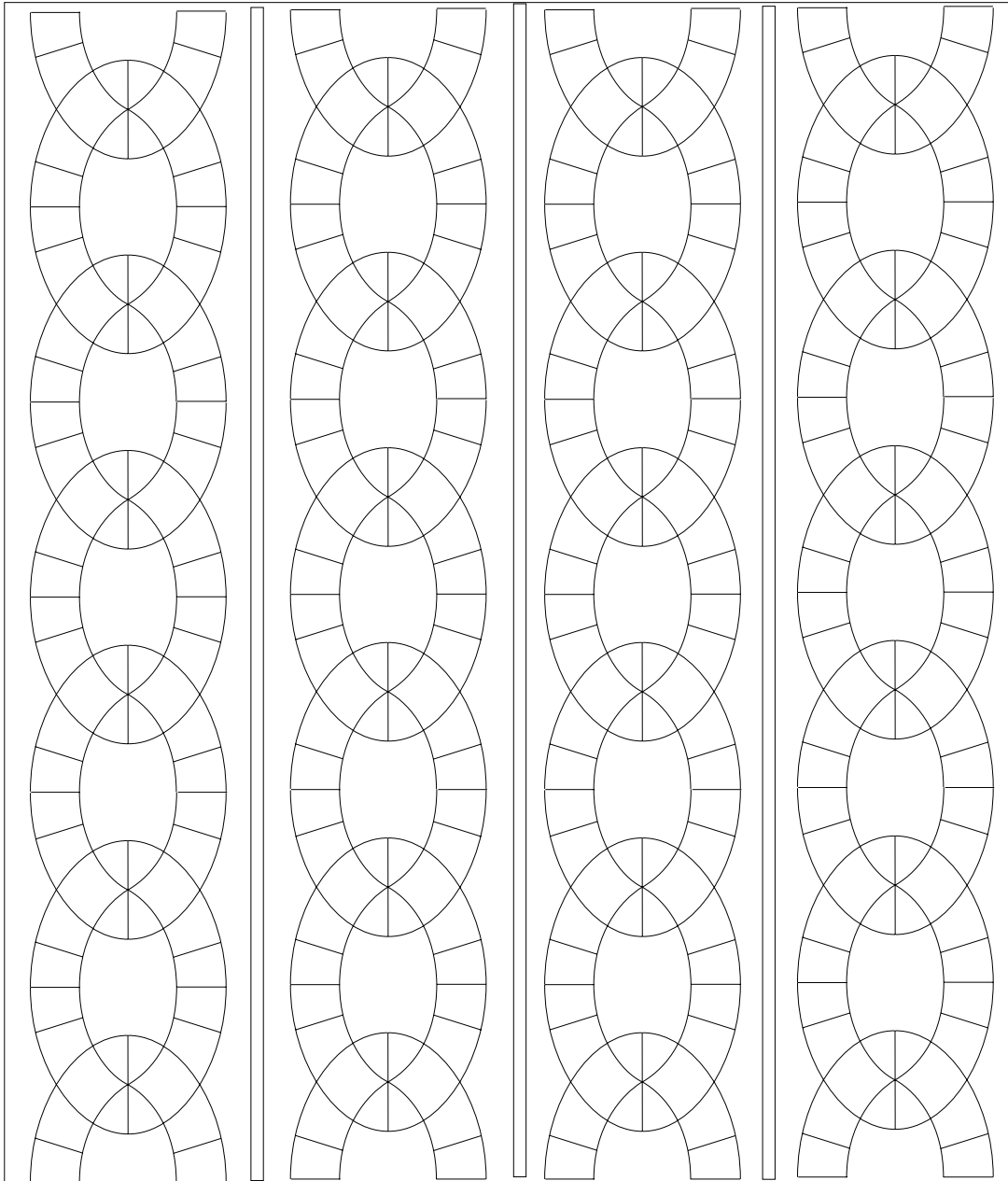
Next, sew the background pieces J to the sides of the blocks to complete each row.

Sew 5 vertical rows together to make up the quilt.

*Finished size: 64" long x 50" wide
note:- each additional chain
block will add 8" to the length and
each additional row will add 10" to the
width*



DAISY CHAIN QUILT pattern by Brigitte Giblin



COT SIZE QUILT - 44" wide x 48" long

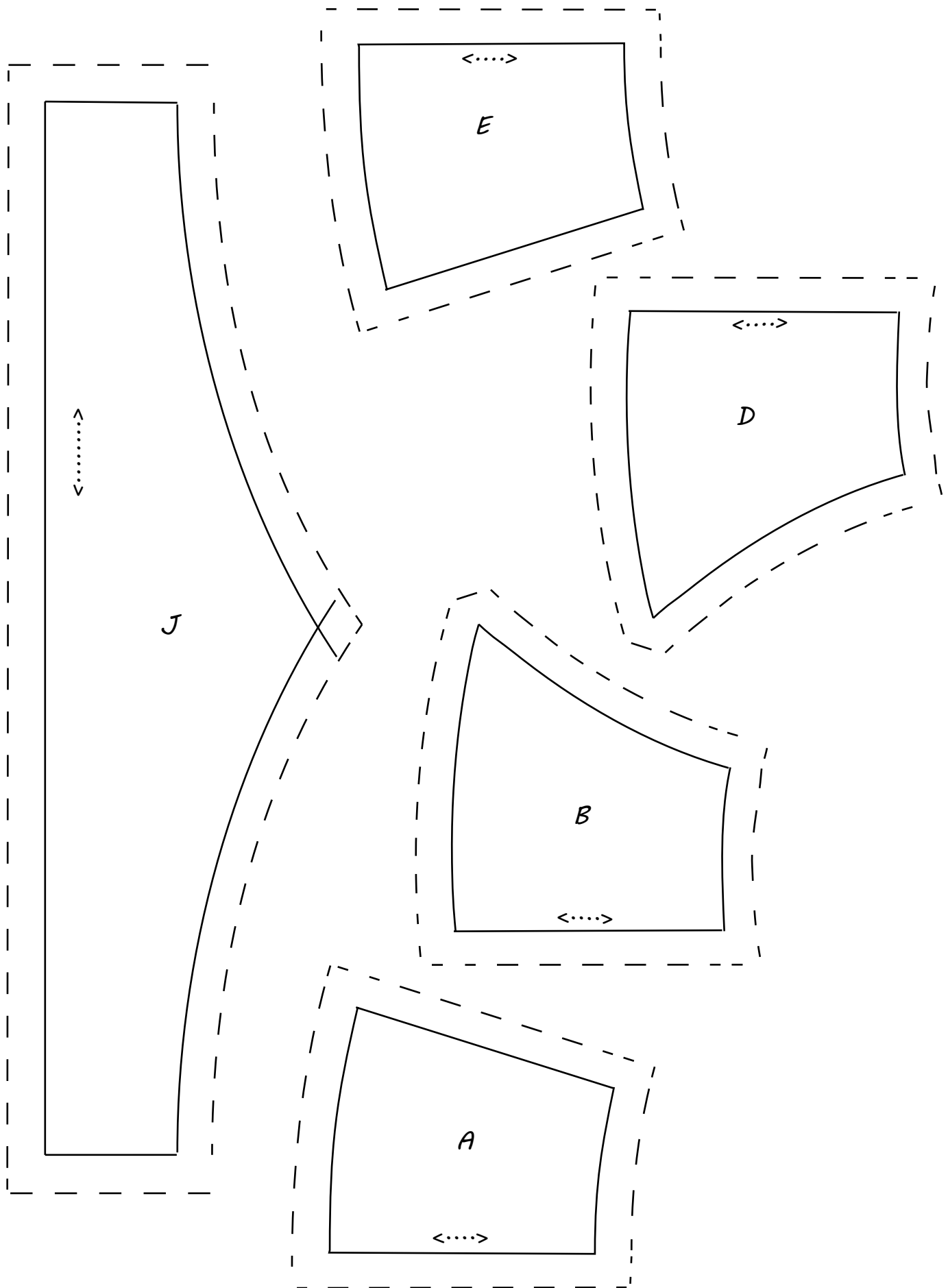
Instructions are given for the single-bed size quilt. Adjust number of pattern pieces if you are making the Cot size.

The COT size is made up of 4 vertical rows of 5 blocks + half blocks on the top and bottom of the rows. 3/4" finished sashing is sewn between each row. Cut the sashing strips 1-1/4" wide to finish at 3/4" Bind the quilt with the same sashing fabric or add a small border all around. Traditionally, patchwork quilts made in the 1930's were without borders.

Note that the cover photo features the Cot Size quilt.

DAISY CHAIN QUILT pattern by Brigitte Giblin

ten pattern pieces: A, B, C, D, E, F, G, H, I & J



DAISY CHAIN QUILT pattern by Brigitte Giblin

